

**EXPLORE
EDMONTON**



Winter

Trip Summary

Day 1

Breakfast at Little Brick - Little Brick

Revolution Cycle Fat Bike Tour - Revolution Cycle

Lunch + Brew Tour at Situation Brewing - Situation Brewing

Experience the Boardwalk Ice on Whyte Festival

Explore Old Strathcona - Old Strathcona, Blackbyrd Myoozik, Wee Book Inn, The Junque Cellar, Yelo'd Ice Cream & Bake Shoppe, Gravity Pope

Dinner at MEAT - Meat

Day 2

Breakfast at Pip - Pip

Silver Skate Festival

Dinner at Rostizado - Rostizado

Check out Canada's only Neon Sign Museum

Edmonton Oiler's Game at Rogers Place - ROGERS PLACE

Day 3

Explore Old Strathcona Farmer's Market at Leisure - Old Strathcona Farmers' Market

River Valley Adventure Co. Segway Tour - River Valley Adventure Co.

Lunch at Wilfred's - Wilfred's

Snowshoe and Stargazing Tour at Elk Island National Park - Elk Island National Park

Nightcap at Clementine - Clementine

Day 4

Breakfast at Cafe Linnea - Cafe Linnea

Visit the Ice Castles - William Hawrelak Park Road Northwest

Lunch at Bundok - Bündok

Experience the Flying Canoe Volant Festival - La Cité

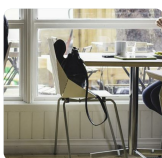
Day 1



Breakfast at Little Brick

Little Brick is a charming cafe in an old brick house built in 1903 in the heart of the river valley. It's the former family home of J.B. Little, the owner of the brickyard that used to call the area home and provided bricks to Edmonton's most historical buildings (a replica of J.B. Little's Brickyard is set up on 1920 street at [Fort Edmonton Park](#)). The house is now a cafe, general store and event space with offices upstairs.

Walk into the neighbourhood off the river valley trails and make yourself at home with a coffee and artisanal sandwich in hand (on freshly baked bread). Browse the general store shelves stocked with locally made delights such as housewares, body products, high quality cooking/baking ingredients, greeting cards, and basic groceries like eggs and milk. It has such a welcoming feel! Whether you find a spot in the living room, dining room, or in the backyard, you'll feel like you're sitting in an old friend's home.



Little Brick

10004 - 90 Street NW, Edmonton, AB, CA, T5H 4P4
7807051230

Little Brick is a charming cafe in an old brick house built in 1903 in the heart of the river valley. It's the former family home of J.B. Little, the owner of the brickyard that used to call the area home and provided bricks to Edmonton's most historical buildings (a replica of J.B. Little's Brickyard is set up on 1920 street at Fort Edmonton Park). The house is now a cafe, general store and event space with offices upstairs.

Walk into the neighbourhood off the river valley trails and make yourself at home with a coffee and artisanal sandwich in hand (on freshly baked bread!). Browse the general store shelves stocked with locally made delights such as housewares, body products, high quality cooking/baking ingredients, greeting cards, and basic groceries like eggs and milk. Whether you find a spot in the living room, dining room, or in the backyard, you'll feel like you're sitting in an old friend's home.

Contact:
Katherine Forgie
katherine@littlebrick.ca
780-705-1230



Revolution Cycle Fat Bike Tour

Join Revolution Cycle on a fat bike tour in Edmonton's river valley.

With some 400 combined kilometres of paved and single track trails, winter transforms the Edmonton

river valley into a cyclist's version of the TV series *Ice Road Truckers*—but without the drama. Essentially, by slapping monster truck tires on a widened mountain bike frame, you get an abominable snowmobile that can chew through snow and ice. If you've ever felt the sensation of drifting in a car, imagine the same thing balanced on two wheels and going downhill.



Revolution Cycle

15103 Stony Plain Road, Edmonton, AB, CA



Lunch + Brew Tour at Situation Brewing

Situation Brewing Company, located in the heart of Old Strathcona, is a fully functioning microbrewery. They are dedicated to crafting a rotating line up of exciting beers, all brewed onsite. Pop in for a brewery tour, a pint, or a meal in the attached restaurant with views of the the brewers hard at work.



Situation Brewing

10308 81st Avenue NW, Edmonton, AB, CA, T6E 1Z2



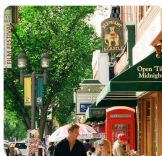
Experience the Boardwalk Ice on Whyte Festival

Every year, the Boardwalk Ice on Whyte Festival grabs Canadian winter by the snowballs and carves it into a wicked combo of ice and art. Just imagine, 96,000 pounds of ice is dumped just to prep for this week long party – on purpose! So, get your toque on and come down to the International Ice Carving Competition, visit the ice bar, or learn to carve ice just like a pro. One of the hottest shows is on the last night, where you'll see fire melt an ice sculpture right back into H2O!



Explore Old Strathcona

Anchored by the funky, bohemian spirit of Whyte Avenue, historic buildings blend with youthful exuberance to make Old Strathcona one of Edmonton's trendiest neighborhoods. The city's celebrated arts and cultural community makes its home here, as does a plethora of unique local boutiques, one-of-a-kind art galleries and music shops, and trendy restaurants and cafés.



Old Strathcona

Edmonton, AB, CA

780-437-4182

Old Strathcona is a historic district located in south-central Edmonton, Alberta, Canada. Once the commercial core of the separate city of Strathcona, the area is now home to many of Edmonton's arts and entertainment facilities, as well as a local shopping hub for local residents and students at the nearby University of Alberta. Many of the area's businesses are owner-operated but, chains have also made inroads in the neighbourhood. A good proportion of Edmonton's theatres and live-performance venues are also located in the area. The district centres on Whyte (82) Avenue and has shops, restaurants, bars and buskers. Official definitions Provincial historic area In 2007, Old Strathcona was named Alberta's second Provincial Historic Area. The district comprises an area of five city blocks from 85 Avenue south to 80 Avenue and from 102 Street west to 106 Street. Business revitalization zone The Old Strathcona and Area Business Revitalization Zone is a roughly cross-shaped business revitalization zone, extending along Whyte Avenue from just west of 109 Street in the west, to just east of 99 Street in the east, and along Gateway Boulevard from 86 Avenue in the north to University Avenue in the south.



Blackbyrd Myoozik

10442 82nd Avenue, Edmonton, AB, CA, T6E 2A2



Wee Book Inn

10310 Whyte Ave, Edmonton, AB, CA, T6E 1Z8

(780) 432-7230



The Junque Cellar

10442 Whyte 82nd Avenue, Edmonton, AB, CA, T6E 2A2



Yelo'd Ice Cream & Bake Shoppe

10150A 82 Avenue Northwest, Edmonton, Alberta, CA, T6E 1Z4



Gravity Pope

10442 82 Ave., Edmonton, AB, CA, T6E 2A2



Dinner at MEAT

MEAT is a locally owned and operated smokehouse located in the heart of Old Strathcona. An authentic BBQ experience with homemade sauces, savoury sides, and a casual welcoming room to indulge. It's a great place to bring a group of people and share a few meat platters and side dishes.



Meat

8216-104 St., Edmonton, AB, CA, T6E 4E5

(587) 520-6338

MEAT is a locally owned and operated smokehouse located in the heart of Old Strathcona. An authentic BBQ experience with homemade sauces, savoury sides, and a casual welcoming room to indulge. It's a great place to bring a group of people and share a few meat platters and side dishes.

Contact:

587-520-6338
info@meatfordinner.com

Day 2



Breakfast at Pip

Brought to you by The Next Act and MEAT family, PIP is a cute 28 seat restaurant in the heart of Old Strathcona, Edmonton. Serving premium comfort food - Brunch by day // dinner til late // cocktails & wine always.



Pip

10403 83 Ave, Edmonton, AB, CA, T6E 2C7



Silver Skate Festival

This festival is an extravaganza of art, culture, recreation and sport! Edmonton's oldest winter festival returns and it is free for the whole family.

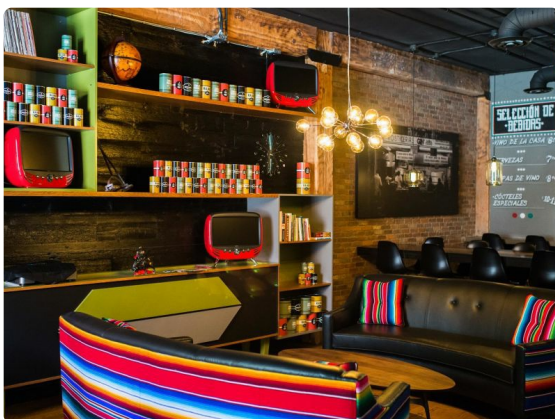
Wander through the snow Sculpture Garden, try your hand at Jam-Can Curling, cheer on the racers at the Kortebaar—a traditional Dutch long-blade skate race, cheer on competitors in the Northgate skate races, check out the 2017 Capital Classic Hockey Tournament, explore the magical Silver Skate Folk Trails, or enjoy live entertainment after the sun goes down during Night Works. Don't miss the line-up of artists and live music performers at the festival.

Year after year a favorite among visitors is Fire Sculpture. With the pitch black winter sky as a backdrop, sculptures and effigies burn orange, amber and gold dancing across the snow telling tales from all over the world. The hot glow from this beautiful display will warm your ice cold, rosy cheeks—a true goosebumps moment.



Dinner at Rostizado

Featuring an old-world cooking concept made modern, Rostizado brings the style, spice and flare of Mexico's rosterias in food best devoured family-style. The Nuevo-Latino cooking shows the diverse culinary riches found across the 32 states of Mexico, with the restaurant's name, Rostizado, literally translating to "roasted". Slow cooked, heartening, and in an atmosphere that feels like you're at a friend's place instead of restaurant. Must try: The Churros!



Rostizado

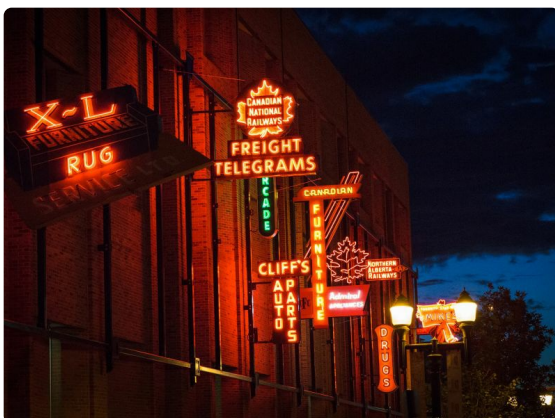
10359, 104 St
(780) 761-0911



Check out Canada's only Neon Sign Museum

The City of Edmonton Heritage Planning has collected neon signs from old or demolished buildings, and they are on display outdoors on the 4th Street Promenade. The museum started with 8 signs representing early styles and iconic signage in Edmonton's history, with the goal of collecting 30. Each sign has an accompanying plaque telling the story of the neon sign.

In the 20th century, neon was an industry standard for sign makers. Nowadays, the fuel and artisans are rare and expensive, making neon signs a dying industry. The Neon Sign Museum serves as a place to display and appreciate the businesses of the past.



Edmonton Oiler's Game at Rogers Place

The Edmonton Oiler's are proud to call Rogers Place home, playing in the most spectacular hockey venue in the world.

With its stunning curvilinear architecture and an interior that'll make you think you just stepped onto the Starship Enterprise, Rogers Place is sure to make your jaw drop. Home to young phenom Connor McDavid, the arena features state of the art technology including the largest high definition screen in the NHL.



ROGERS PLACE

10220 104 Avenue NW, Edmonton, AB, CA, T5J 4Y9
(780) 421-4540

Rogers Place is home ice for the NHL's Edmonton Oilers and WHL's Edmonton Oil Kings, and the epicentre of live entertainment in Edmonton.

Day 3



Explore Old Strathcona Farmer's Market at Leisure

Saturdays, 8am - 3pm

Welcome to Edmonton's largest, year-round, indoor farmer's market.

With over 130 vendors every Saturday, the Old Strathcona Farmers' Market has an impressive assortment of hand-made goods – locally grown produce, specialty foods, jewelry, decor, arts and crafts, clothing, accessories, pottery and so much more! We don't allow any re-sale in our market, so everything is made personally by the vendor who is selling it. Come check out the market this Saturday – you're sure to find something great to take home!



Old Strathcona Farmers' Market

10310 83 Ave, Edmonton, AB, CA, T6E 5C3
(780) 439-1844



River Valley Adventure Co. Segway Tour

Visiting Edmonton's river valley but only brought your walking shoes? River Valley Adventure Co. is situated right in the river valley with Segway tours, mountain bike rentals, and sports equipment just waiting to be put to good use in our world famous river valley.

Edmonton's river valley is an urban gem, with over 150 km of trails for running, biking, snow shoeing, cross country skiing, and more.

For Segway tours, you'll start with a lesson from a certified member of their team who will offer tips and training. Soon, you're off on a scenic Segway trek. Your guide will share some of Edmonton's natural history and keep you warm with wit and natural wonders along the way.



River Valley Adventure Co.

9735-Grierson Hill NW, Edmonton, AB, CA, T5N 1J9

780-995-7347

Visiting Edmonton's river valley but only brought your walking shoes? River Valley Adventure Co. is situated right in the river valley with Segway tours, mountain bike rentals, and sports equipment just waiting to be put to good use in our world famous river valley.

Edmonton's river valley is an urban gem, with over 150 km of trails for running, biking, snow shoeing, cross country skiing, and more.

For Segway tours, you'll start with a lesson from a certified member of their team who will offer tips and training. Soon, you're off on a scenic Segway trek. Your guide will share some of Edmonton's natural history and keep you warm with wit and natural wonders along the way.

Contact:

Chris Szydlowski

chris.segway@me.com

780-995-7347



Lunch at Wilfred's

Bright, beautiful and inviting, Wilfred's café and diner blends nostalgia with new, old with original. Whether you're sipping your morning coffee at sunrise or savouring a glass of rosé after sunset, grabbing breakfast on the go or settling in for a long dinner—they're open every meal of the day, from dawn to well past dusk.

Wilfred's is a family owned and operated business that focuses on the relationships between loved ones and neighbours. Named after the father of one of the owners, Wilfred's is a place to create happy memories and indulge in good food and drink.





Wilfred's

10429, Edmonton, AB, CA, T5N



Snowshoe and Stargazing Tour at Elk Island National Park

Elk Island National Park has higher densities of hoofed mammals per square kilometre than any other area in the world, and is the cornerstone of Canada's bison conservation story. Without this place and the dedication of its people, herds of plains and woods bison would not thrive in Canada today. Connections are made here; it is where you can become a steward of these iconic creatures, and discover their importance to the heart and soul of this nation.

Come take part in two unique experiences at Elk Island National Park: snowshoeing and stargazing!

Begin your experience with a short guided hike on snowshoes around the shore of Astotin Lake.

Grab some refreshments and gather around the fire. Gaze up and stare into the night sky full of stars. With a park interpreter as your guide, navigate the sky of the Beaver Hills Dark Sky Preserve; without the glow of city lights around you'll see more than you knew existed.

After learning about the constellations above, strap your snowshoes back on for the short hike back to the Astotin Lake Recreation Area. As you walk along, listen for the crunch of snow underfoot, trees blowing in the breeze, or the call of an owl overhead.



Elk Island National Park

Improvement District No. 13, Alberta, CA, T8G 2A6
(780) 922-5790



Nightcap at Clementine

Intimate, with a variety of seating, the Art Nouveau-inspired design encourages dallying over delicious and ever-changing small plates by chef Roger Letourneau. Enjoy thoughtful cocktails along with an outstanding wine list.



Clementine

11957 Jasper Avenue NW, Edmonton, AB, CA, T5K 0P1
7807564570

Bistro and cocktail/wine bar in the Pearl Tower. Limited reservations available at www.barclementine.ca

Day 4



Breakfast at Cafe Linnea

Inspired by traditional Scandinavian and French cuisine, Café Linnea fuses familiar bistro fare with locally sourced ingredients. Café Linnea is the passion project of chef and owner Kelsey Johnson. Her intention? Respect for the produce, the process and the people involved in bringing quality food to table. They are committed to reflecting the community's rich growing tradition with an ever-changing menu galvanized by the seasons and in support of the farmers.

All four owners were born and raised in Edmonton, and having traveled the world for work and pleasure, made their way back home. The interior of the restaurant is done by local makers and artists - from the tables and bar, the cherry wood shelves, and handcrafted cider mugs.

[Instagram](#)

[Twitter](#)

[Facebook](#)

Contact:

(780) 758-1160



Cafe Linnea

10932 119 street, Edmonton, AB, CA, T5M 0R5
7807581160

Serving Brunch, Dinner & High Tea in Edmonton AB. Café Linnea fuses traditional Scandinavian and French cuisine with locally sourced ingredients. We are committed to reflecting our community's rich growing tradition with an ever-changing menu galvanized by the seasons and in support of our farmers. We are a no-tipping establishment.



Visit the Ice Castles

Step into the ultimate winter wonderland when you visit the giant Ice Castles. This enchanting acre-sized castle is crafted by hand using only icicles and water. Venture through the stunning, Narnia-like display and snap a selfie at some favorite photo spots including the throne room, in front of the waterfall and throughout the winding ice maze. For the third time in forever, the Ice Castles are coming to Canada, so don't miss the opportunity to see this icy masterpiece.



William Hawrelak Park Road Northwest

William Hawrelak Park Road Northwest, Edmonton, Alberta, CA, T6G



Lunch at Bundok

Boondocks: an expression derived from the word bundok, meaning a rural place or off the beaten path. Bundok is an inviting neighbourhood restaurant, located in the Ice District of Edmonton, Alberta, with intentions of celebrating the people and food of the community. The process of transferring boondocks into Bundok is synonymous with our thought process of involving the history of ingredients

and region into our own vision.



Bündok

10228 104 Street Northwest, Edmonton, Alberta, CA, T5J 1B8



Experience the Flying Canoe Volant Festival

Join one of Edmonton's great winter festivals! The Flying Canoe Volant is a creative, interactive, and cultural event that celebrates local history and everything that is great about a long winter's night.

Loosely based on the legend of the Flying Canoe, and on French-Canadian, First Nation, and Métis traditions, the Flying Canoe Volant invites you for a nighttime adventure in Edmonton's French Quarter and along the illuminated trails of the Mill Creek Ravine.

Extending from the Mill Creek Ravine to La Cité francophone, this large-scale community offers something for everyone. In the ravine, you'll step into a magical surrounding as you encounter artistic lighting installations and engage in Métis jigs/reels, bannock making, storytelling, drumming, and conversation. Emerging from the ravine, hop on a horse-drawn carriage towards La Cité francophone. On the way, a community stage, snacks and snow carvings await at Rutherford School. Finish off the night in celebration at La Cité francophone with bilingual musical performances in the cabaret, children's activities, multi-disciplinary Aboriginal artist representations, a winter patio, outdoor DJ and a snow slide.

So put on your toque and mittens and let's brave the cold!



La Cité

8627-91 street, Edmonton, AB, CA